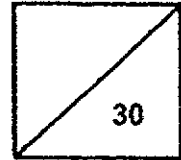


Red Swastika School
Primary 3 Science
Class Test 1



Name: _____ () Parent's Signature: _____

Class: Pr. 3 _____ Date: _____

Section A: Multiple-Choice Questions (9 x 2 = 18 marks)

Choose the most suitable answer and write its number in the brackets provided.

1. Which of the following statements is true?

All animals _____.

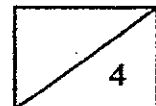
- (1) can fly
- (2) lay eggs
- (3) can walk
- (4) can reproduce ()

2. Look at the table below.

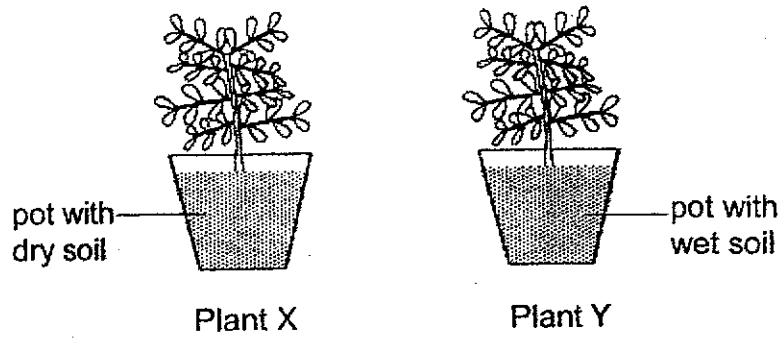
| Living things | Non-living things |
|---------------|-------------------|
| tiger | spider |
| rose plant | doll |

Which item is grouped wrongly?

- (1) doll
- (2) tiger
- (3) spider
- (4) rose plant ()



3. Mary placed two similar pots of plants, X and Y, in a school garden for a few days. She watered Plant Y daily but not Plant X.



After some time, she observed that Plant X died but Plant Y grew well and taller. She concluded that plants need _____ to live.

- (1) air
- (2) food
- (3) light
- (4) water

()

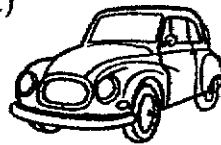
4. Which of the following is a non-living thing?

(1)



tree

(2)



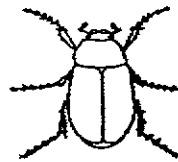
car

(3)



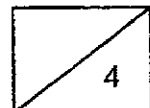
mushroom

(4)

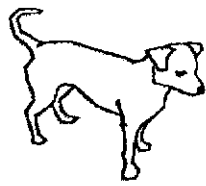


beetle

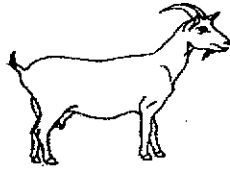
()



5. Study the four animals below.



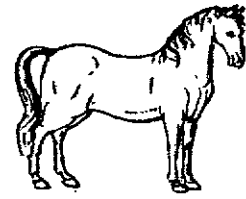
dog



goat



lizard



horse

Which animal does not belong to the same animal group as the others?

- (1) dog
- (2) goat
- (3) lizard
- (4) horse

()

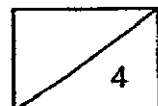
6. The table below shows the characteristics of four animals. A tick (✓) means the animal has the characteristics.

| Animal | Has legs | Has feathers | Lives in water |
|--------|----------|--------------|----------------|
| A | ✓ | ✓ | |
| B | | | ✓ |
| C | ✓ | | |
| D | ✓ | | ✓ |

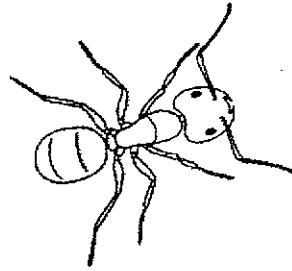
Which animal, A, B, C or D, represents a pigeon?

- (1) A
- (2) B
- (3) C
- (4) D

()



7. The picture below shows Animal A.



Which characteristic(s) of Animal A is/are more useful in identifying it as an insect?

- A: Number of legs
- B: Presence of three body parts
- C: Length of feelers on its head

- (1) B only
 - (2) C only
 - (3) A and B only
 - (4) A and C only
- ()

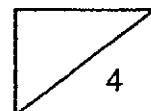
8. The table below shows the characteristic(s) of items A and B. The tick (✓) in the box shows the characteristics the item has.

| Characteristic | A | B |
|-----------------------|---|---|
| Can make its own food | ✓ | |
| Respond to changes | ✓ | ✓ |

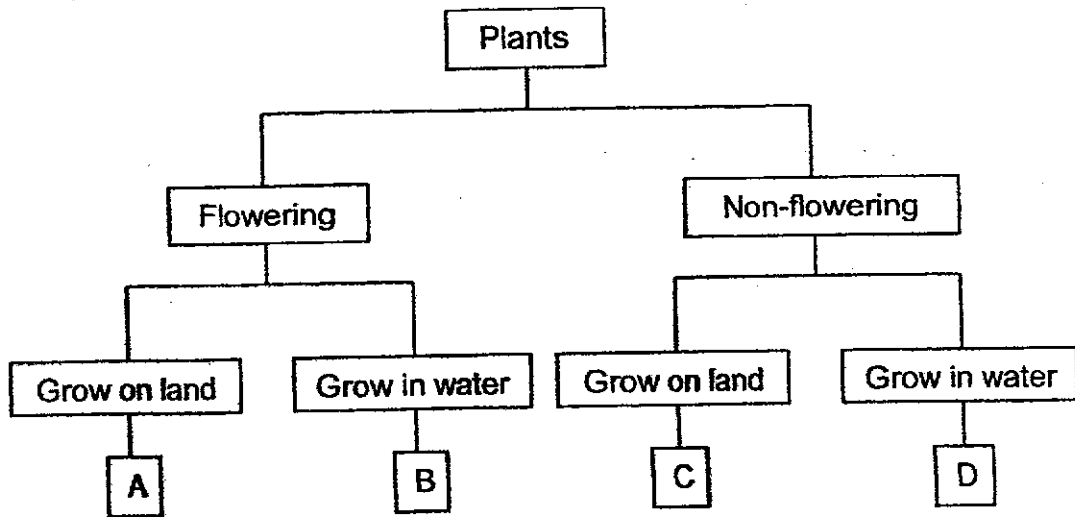
Which of the following sets best represent A and B?

| | A | B |
|-----|------------------|------------------|
| (1) | plant | animal |
| (2) | animal | non-living thing |
| (3) | non-living thing | plant |
| (4) | plant | non-living thing |

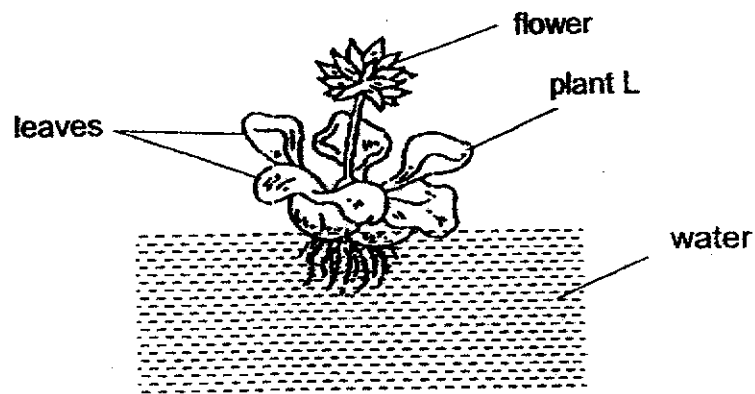
()



9. Study the classification chart below.



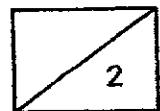
The diagram below shows plant L.



In which group, A, B, C or D, would plant L belong to?

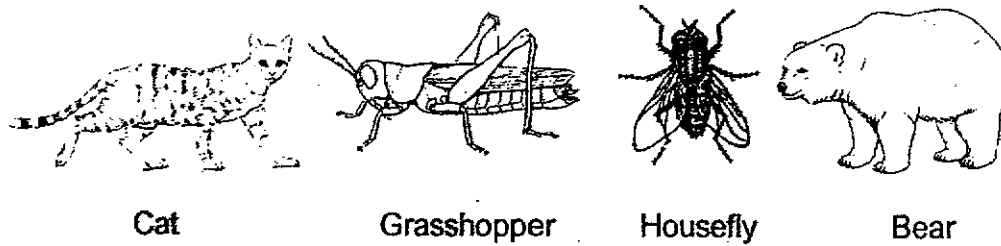
- (1) A
- (2) B
- (3) C
- (4) D

()

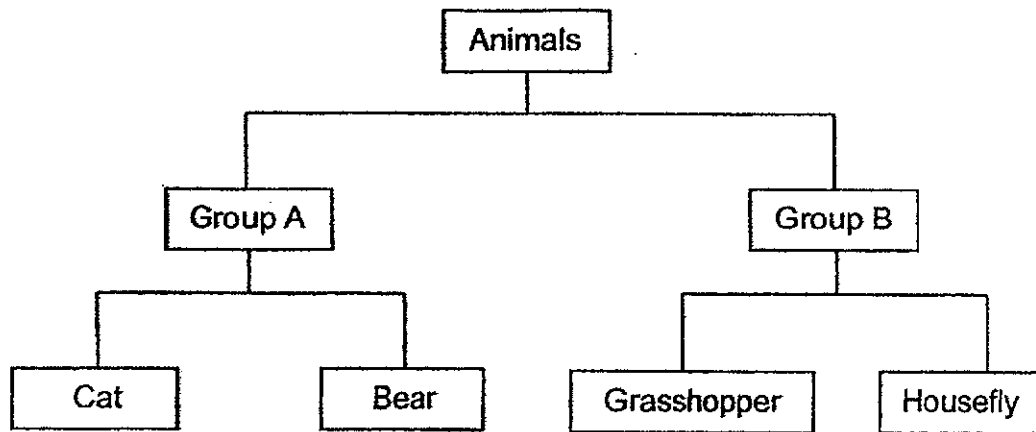


Section B: Open-ended Questions (3 Questions – 12 marks)

10. The diagram below shows different animals.



Kasim classified the animals into two groups.



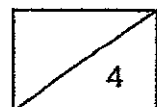
- (a) Identify the group of animals in Groups A and B. [2]

Group A: _____

Group B: _____

- (b) Which group, A or B, could Kasim classify a cow in? [1]

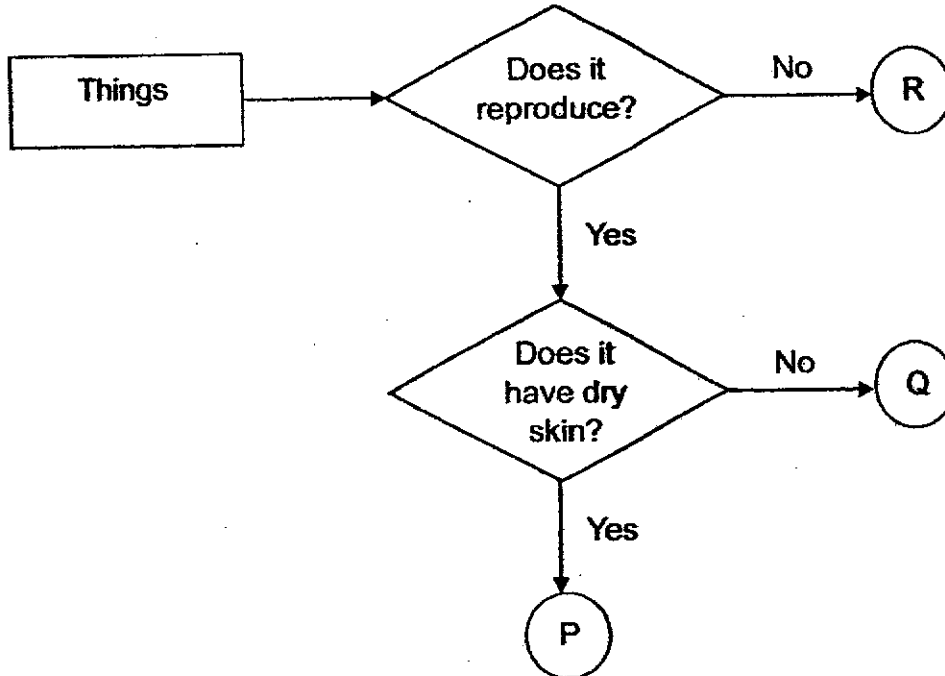
- (c) State a difference in the way animals in Groups A and B reproduce. [1]



11. At the zoo, Sheila listed what she saw in the box shown below.

- Amphibian
 - Reptile
 - Bench

She then drew a flow chart of what she saw at the zoo, as seen below.

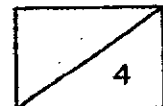


(a) Based on the information in the flow chart, describe the characteristics of P. [2]

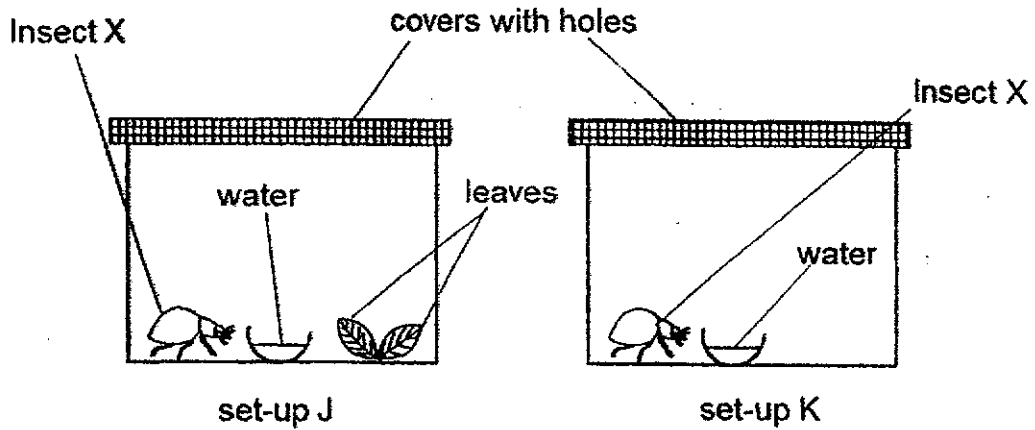
(b) Complete the following by writing P, Q or R in the correct spaces provided. [2]

Bench: _____

Amphibian: _____



12. Peter kept two similar Insect X in set-ups J and K as shown in the diagram below.

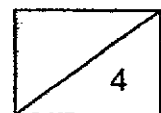


(a) Based on the diagram, identify one similarity between set-up J and set-up K. (Do not mention Insect X). [1]

(b) Peter changed the cover in set-up K to a cover with no holes. What would happen to Insect X in set-up K after one week? [1]

(c) Explain your answer in (b).

(d) After some time, insect X in set-up J laid some eggs in the container. Which characteristic of living things does this show? [1]



ANSWER KEY

LEVEL : Primary 3
SCHOOL : Red Swastika School
SUBJECT : SCIENCE
TERM : Class Test 1

Class Test 1

| | | | | | | | | | |
|----|---|----|---|----|---|----|---|----|---|
| Q1 | 4 | Q2 | 3 | Q3 | 4 | Q4 | 2 | Q5 | 3 |
| Q6 | 1 | Q7 | 3 | Q8 | 1 | Q9 | 2 | | |

| | |
|-----|--|
| Q10 | (a) Group A : Mammals Group B : Insects (b) Group A (c) Group A reproduce by giving birth to their young alive while B reproduce by laying eggs. |
| Q11 | (a) P reproduce and have dry skin. (b) Bench : R Amphibian : Q |
| Q12 | (a) Both set up J and K have a bowl of water. (b) Insect X will die earlier. (c) There is no air in set up K. (d) This shows living things reproduce. |

1
END

