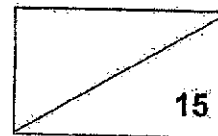


NANYANG PRIMARY SCHOOL
Term 1 Weighted Assessment
Science
Primary 3



Name: _____ () Date: _____

Class: 3 _____ Parent's signature: _____

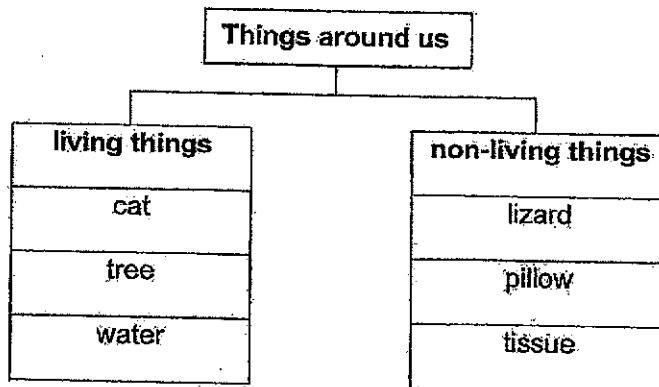
Dear Parent/Guardian,

Please sign the Weighted Assessment paper and have your child/ward return it the next day. Any query should be raised at the same time when returning the paper.

Section A: Multiple Choice Questions (10 marks)

For each question from 1 to 5, four options (1, 2, 3 and 4) are given. One of them is the correct answer. Indicate your choice in the brackets provided.

1.

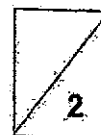


Which of the following had been grouped incorrectly?

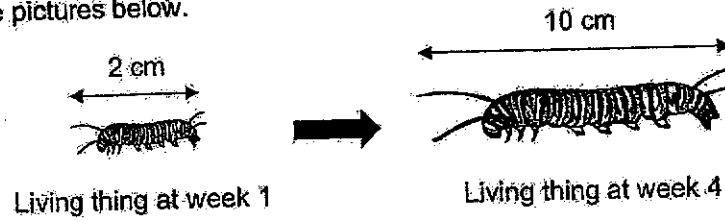
- (1) cat only
- (2) pillow only
- (3) tree and tissue
- (4) water and lizard

()

1



2. Study the pictures below.



Which characteristic of this living thing is shown in the pictures above?

- (1) Living things can grow.
- (2) Living things can reproduce.
- (3) Living things respond to changes.
- (4) Living things need air, food and water.

()

3. Study the two groups of things shown below.

Group A	Group B
<p>The Group A box contains two illustrations: a campfire with flames rising from several logs, and an alarm clock with two bells on top and a circular face with numbers 1 through 12.</p>	<p>The Group B box contains two illustrations: a grasshopper with long hind legs and antennae, and a snake with a patterned body coiled in an S-shape.</p>

Which one of the following statements is correct?

- (1) Only things in group A can grow.
- (2) Only things in group B can reproduce.
- (3) Only things in group A can respond to changes.
- (4) Things in group A and B need air, food and water.

()



4. Mary recorded her observations of Plant J and Plant K in the table below. A tick (✓) represents the observation that the plant has.

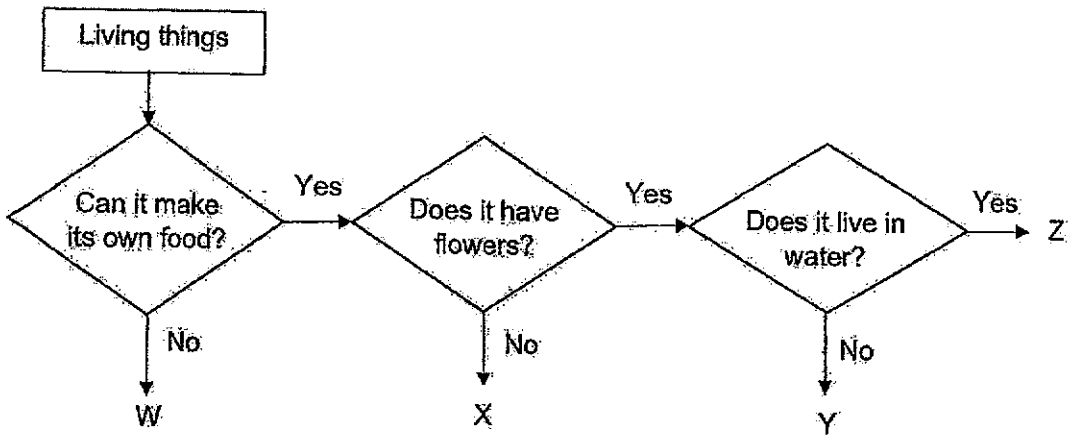
Observations	J	K
It has fruits.	✓	✓
It lives on land.	✓	

Based on the information in the table above, which one of the following statements is correct?

- (1) Plant K is a land plant.
- (2) Plant J is a flowering plant.
- (3) Plant K is a non-flowering plant.
- (4) Plant J reproduces from spores.

()

5. Study the flowchart below.



Based on the flowchart above, which one of the following statements is correct?

- (1) X is a plant.
- (2) Z is an animal.
- (3) W makes its own food.
- (4) Y is a non-flowering plant.

()



Section B: Open-Ended Questions (5 marks)

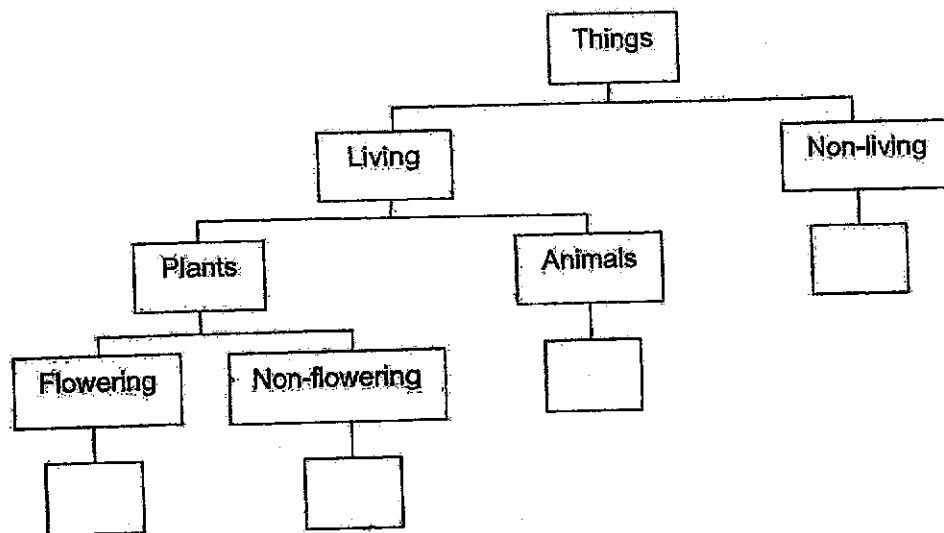
For questions 6 and 7, fill in your answers in the spaces provided.

6. The table below shows the characteristics of 4 things, P, Q, R and S. A tick (✓) represents the characteristic that the thing has.

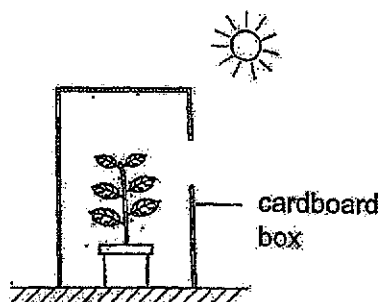
Characteristics	P	Q	R	S
Does it make its own food?				
Does it reproduce from spores?				
Does it need air, food and water?				

- (a) Based on the table above, state one difference between Q and R. [1]

- (b) Classify P and S in the correct boxes below. [1]



7. Jenny had a healthy pot of plant. The plant was covered with a cardboard box with a small opening at the side.



At the start of the experiment

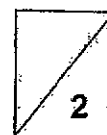
After some time, Jenny observed that the plant grew towards the opening to get sunlight.

- (a) Which characteristic of living thing can be concluded from Jenny's observation? [1]

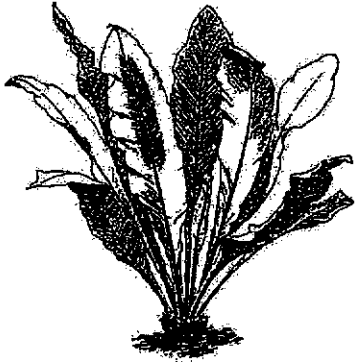
Jenny recorded the height of the plant in a table as shown below.

Day	Height of plant (cm)
2	2
4	5
6	7

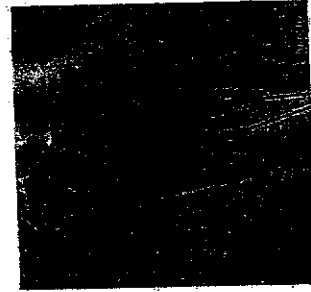
- (b) Describe the change in the height of the plant from Day 2 to day 6. [1]



Jenny found plant X as shown below.



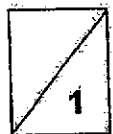
Plant X



Underside of the leaf of plant X

- (c) She said plant X has no flowers so it is a non-flowering plant. Give another reason why Jenny is correct. [1]
-
-

- End of Paper -



Suggested Answer Key – P3 Science WA1 2024Section A

1	4
2	1
3	2
4	2
5	1

Section B

Qns No	Answer
6a)	Q can make its own food but R cannot make its own food.
6b)	Non-flowering plant: P Non-living thing : S
7a)	Living things respond to changes around them.
7b)	The height of the plant increased.
7c)	Data: Plant X has spores. Explanation: Only non-flowering plants reproduce by spores.

