



Nan Hua Primary School  
Primary 3 Science  
Term 4 Practice Paper

Marks	
Section A:	/40
Section B:	/20
<b>Total:</b>	<b>/60</b>

Name: \_\_\_\_\_ ( )

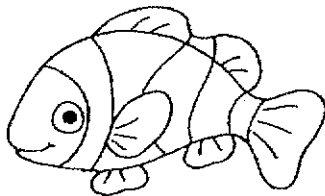
Class: Primary 3/ \_\_\_\_\_

Date: \_\_\_\_\_

**Section A: (20 x 2 marks = 40 marks)**

For each question from 1 to 20, four options are given. One of them is the correct answer. Make your choice (1, 2, 3 or 4). Shade the correct oval (1, 2, 3 or 4) on the Optical Answer Sheet.

1 Look at the pictures below.



fish



toadstool



tree



cloud

Which of the following is a non-living thing?

- (1) fish
- (2) tree
- (3) cloud
- (4) toadstool



2 Which of the following statements about living things are correct?

- A They can reproduce.
- B They are able to grow.
- C They do not respond to changes.
- D They need air, food and water to survive.

- (1) A and B only
- (2) C and D only
- (3) A, B and D only
- (4) A, B, C and D






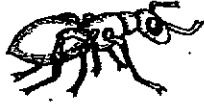
3 Mrs Lee recorded her son's age and height in the table as shown below.

Age (months)	Height (cm)
1	51
3	54
5	57
7	62

Based on the results in the table above, what can you conclude about living things?

- (1) Living things grow.
- (2) Living things move by themselves.
- (3) Living things respond to changes around them.
- (4) Living things need air, food and water to survive.

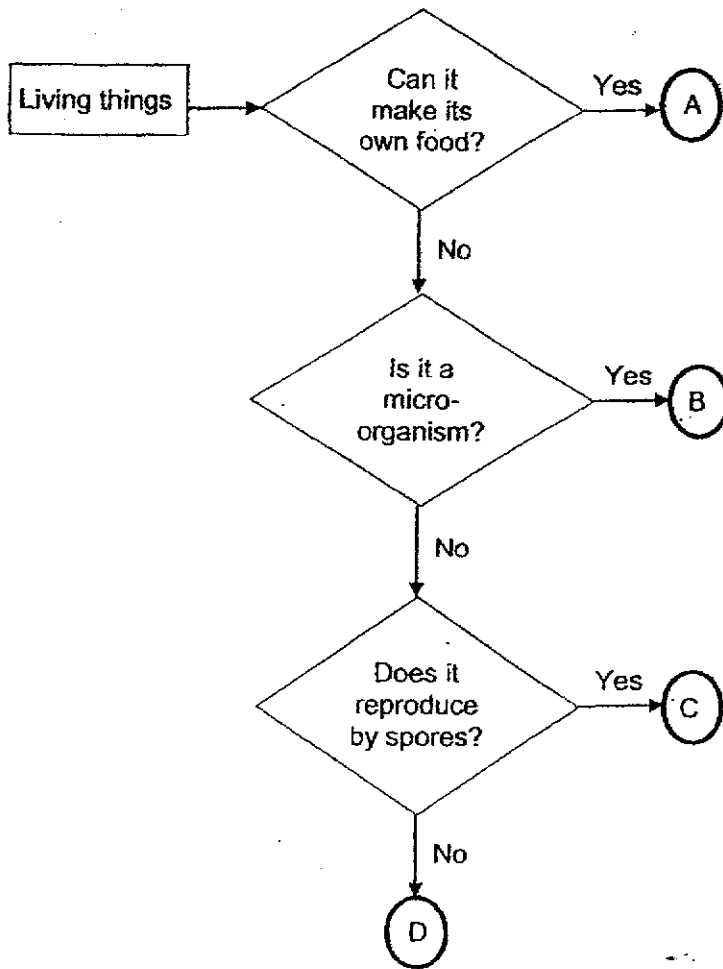
4 Study the table below.

Group P	Group Q
 chicken	 cockroach
 parrot	 spider
 penguin	 ant

Which of the following are suitable headings for Group P and Group Q?

	Group P	Group Q
(1)	Birds	Insects
(2)	Animals with feathers	Animals without feathers
(3)	Can fly	Cannot fly
(4)	Give birth to young	Lay eggs

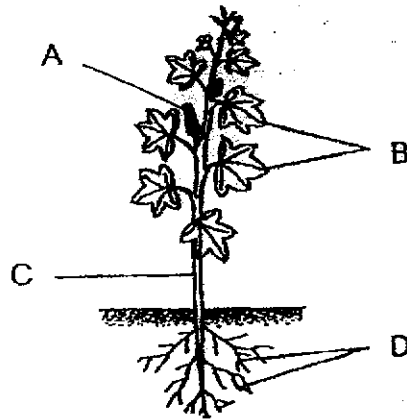
5 Study the flowchart below.



Which of the following could the living things, A, B, C and D, be?

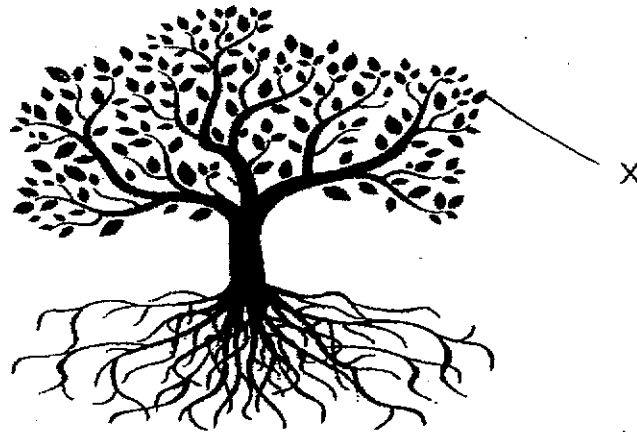
	A	B	C	D
(1)	fern	butterfly	bacteria	mushroom
(2)	mushroom	bacteria	butterfly	fern
(3)	bacteria	fern	mushroom	butterfly
(4)	fern	bacteria	mushroom	butterfly

- 6 The picture below shows a flowering plant.



Which part, A, B, C or D, supports the plant upright?

- (1) A  
 (2) B  
 (3) C  
 (4) D
- 7 The picture below shows a tree.



Which of the following statement(s) state(s) the function(s) of part X?

- A Makes food for the plant  
 B Holds the plant firmly to the ground  
 C Absorbs water and mineral salts from the soil  
 D Transports food, water and mineral salts to all parts of the plant
- (1) A only  
 (2) A and B only  
 (3) B and C only  
 (4) A, C and D only

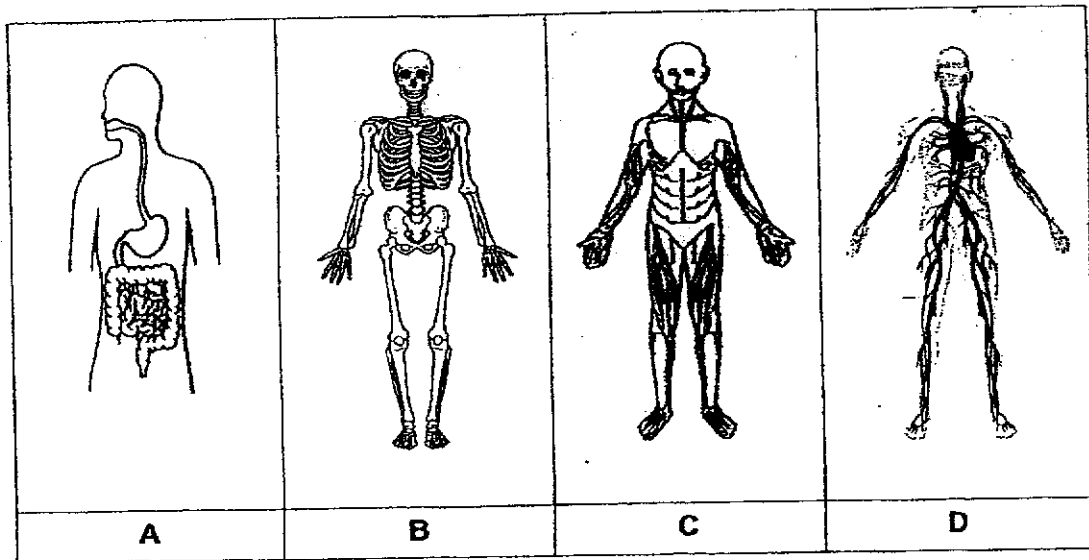
- 8 The table below shows the characteristics of plants, A, B, C and D. A tick (✓) shows that the plant has the characteristic shown.

Characteristic	A	B	C	D
Bear fruits	✓		✓	
Grow on land		✓	✓	✓
Reproduce from spores		✓		✓
Have roots, stems and leaves	✓		✓	✓

Which of the following are flowering plants?

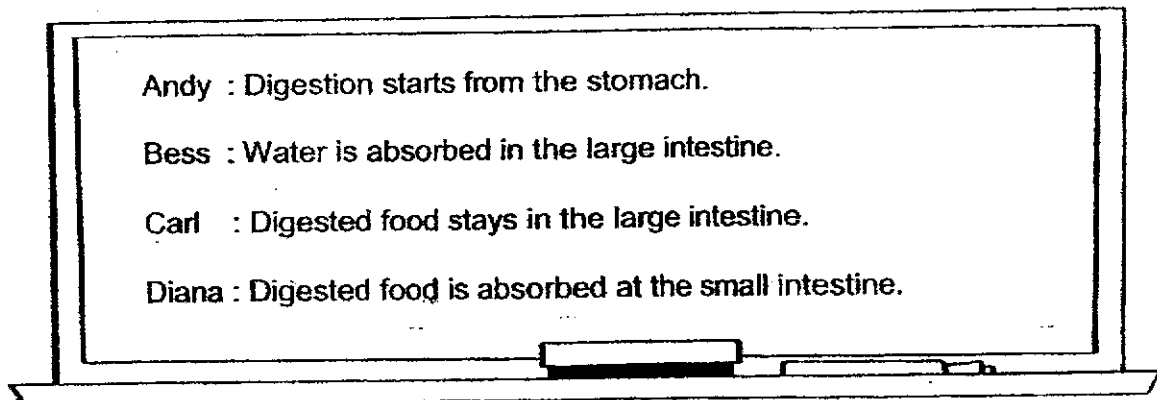
- (1) A and B only
- (2) A and C only
- (3) B, C and D only
- (4) A, C and D only

- 9 The diagrams below show four body systems of a human.



Which system carries digested food, water and oxygen in the blood to all parts of the body?

- (1) A  
 (2) B  
 (3) C  
 (4) D
- 10 Four students wrote down on the whiteboard what they knew about the human digestive system.



Whose statements are **not** correct?

- (1) Andy and Carl only  
 (2) Andy and Bess only  
 (3) Bess and Diana only  
 (4) Bess, Carl and Diana only

11 Which of the following shows how food travels through the digestive system?

- (1) mouth → stomach → small intestine → gullet
- (2) mouth → gullet → small intestine → stomach
- (3) mouth → gullet → stomach → small intestine
- (4) mouth → stomach → gullet → small intestine

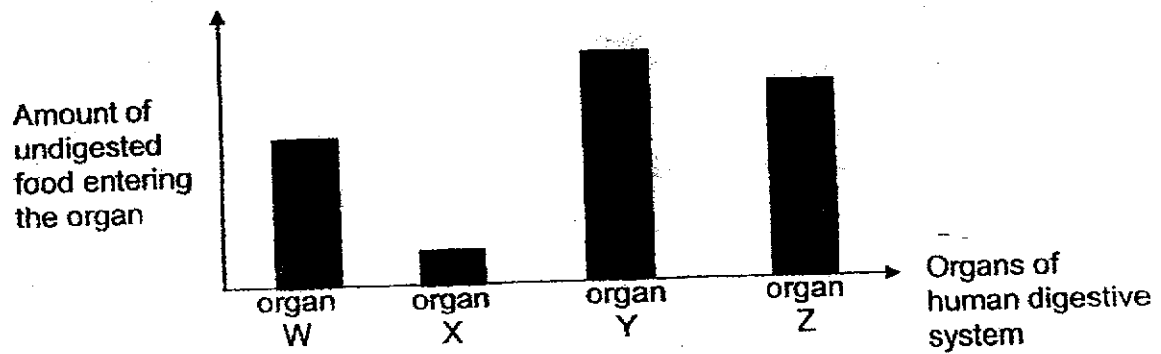
12 Wendy is drinking bubble milk tea.



Which of the following systems are at work when Wendy drinks her bubble tea?

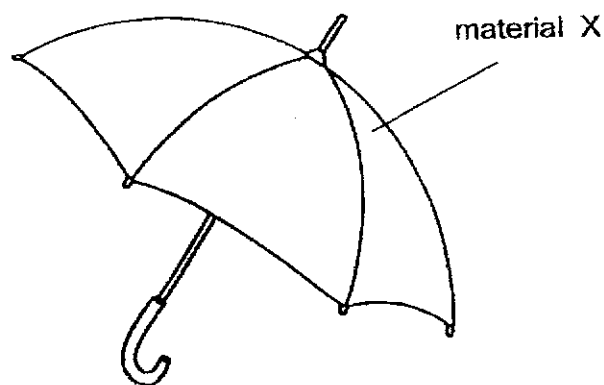
	Systems				
	respiratory	digestive	muscular	circulatory	skeletal
(1)	✓	✓			✓
(2)		✓		✓	✓
(3)	✓	✓	✓	✓	✓
(4)	✓		✓	✓	

- 13 Tom just ate a plate of chicken rice during recess. The graph below shows the amount of undigested food entering the mouth, stomach, small intestine and large intestine in his digestive system. The organs are not arranged in order.



Which organ represents the large intestine?

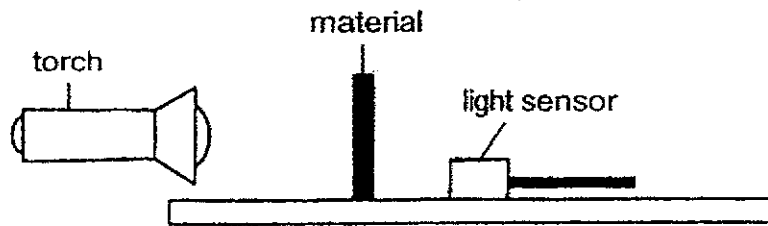
- (1) W
  - (2) X
  - (3) Y
  - (4) Z
- 14 Jane bought an umbrella to shelter her from the rain. The cover of the umbrella is made from material X.



Which of the following properties should material X have?

- (1) It is waterproof.
- (2) It can float on water.
- (3) It can break very easily.
- (4) It does not allow light to pass through.

- 15 John has 3 materials, A, B and C. He conducted an experiment to find out which material is suitable to make a shower curtain as shown below.

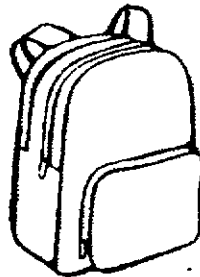


What should be changed in the set-up below to conduct the experiment?

- (1) the type of material
  - (2) the thickness of the material
  - (3) the amount of light shining from the torch
  - (4) The distance between the material and the light sensor
- 16 The table below shows the properties of materials A, B, C and D.

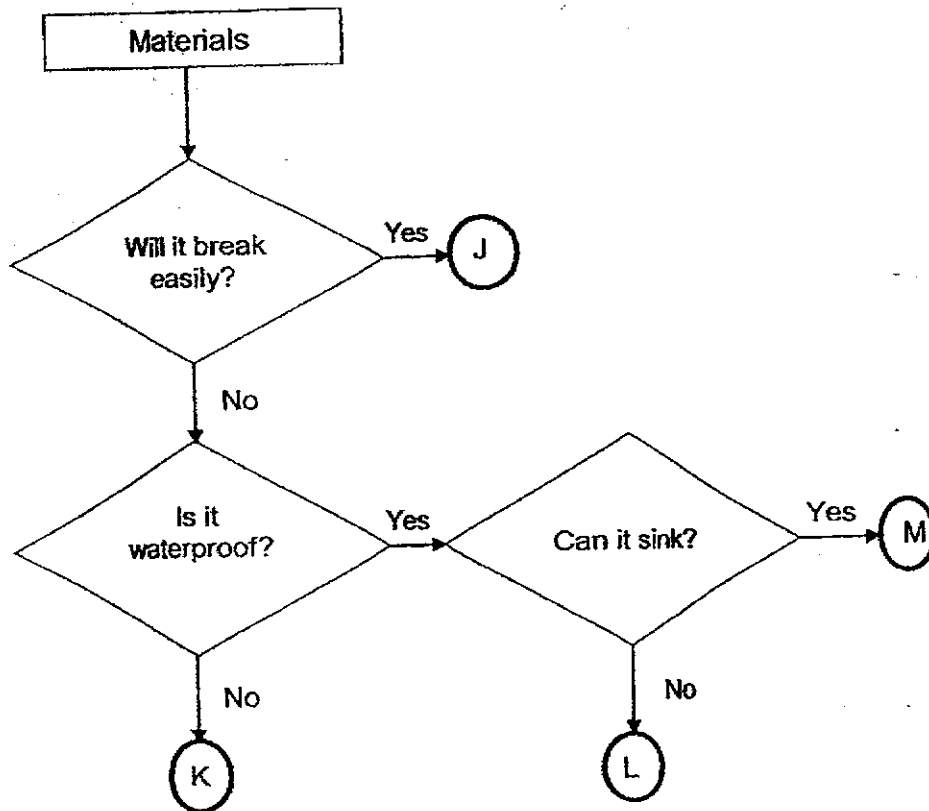
Properties	Material A	Material B	Material C	Material D
Flexibility	x	✓	✓	✓
Strength	✓	✓	✓	x
Waterproof	✓	x	✓	✓

Which material is the most suitable for making a school bag to carry heavy books and prevent the books from getting wet during heavy rain?



- (1) A
- (2) B
- (3) C
- (4) D

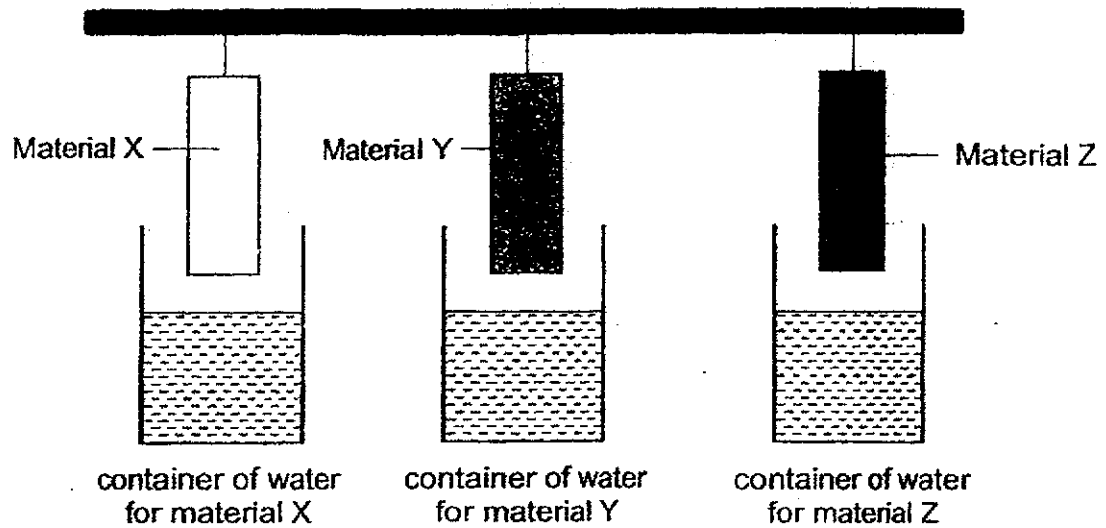
17 Study the flowchart below.



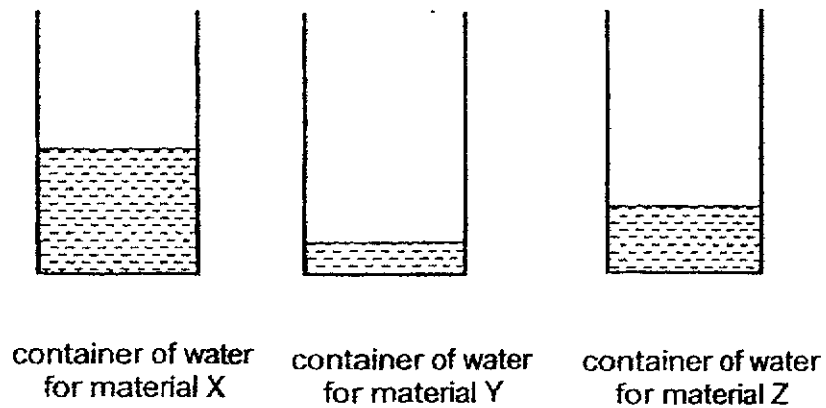
Which of the following material is best suitable to make a toy boat that can float on water and suitable for a child to play safely?

- (1) J
- (2) K
- (3) L
- (4) M

- 18 Peter had three identical containers with the same amount of water at the start of the experiment as shown in the diagram below. He lowered three different materials, X, Y and Z, into the water.



After ten minutes, he removed the three materials. The amount of water left in the containers is shown below.



Based on the above results, which one of the following conclusions is correct?

- (1) Material Y is waterproof.
- (2) Material X is the most absorbent.
- (3) Material Z absorb less water than material X.
- (4) Materials Y and Z absorb more water than material X.

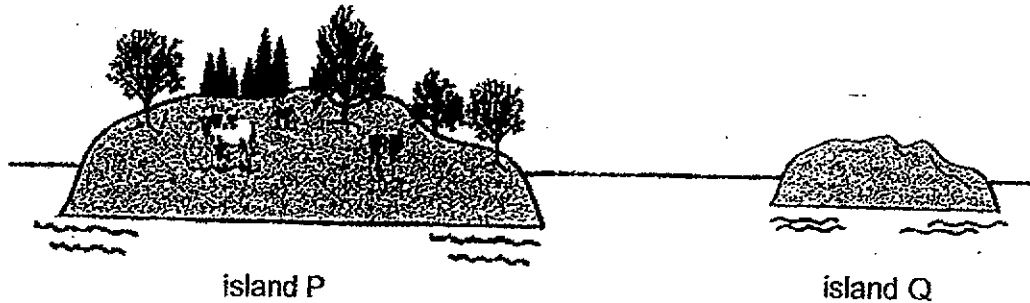
19 Which of the following characteristic(s) is/are found in birds, but **not** in other animals?

- A They lay eggs.
- B They have wings.
- C They have two legs.
- D They have feathers on their bodies.

- (1) B only
- (2) D only
- (3) A, B and D only
- (4) A, B, C and D

- 20 Study the diagram below. At first, island P had both plants and animals but island Q had no plants and animals.

On island P, a forest fire broke out one day and burnt down the whole forest. Some animals died while some escaped to island Q.



Based only on the description above, which of the following characteristics of living things is/are observed?

- A Living things need food.
  - B Living things reproduce.
  - C Living things can respond to changes around them.
  - D Some living things can move from place to place on their own.
- (1) A and B only  
 (2) A and D only  
 (3) B and C only  
 (4) C and D only



**Nan Hua Primary School  
Primary 3 Science  
Term 4 Practice Paper**

Name: \_\_\_\_\_ ( )

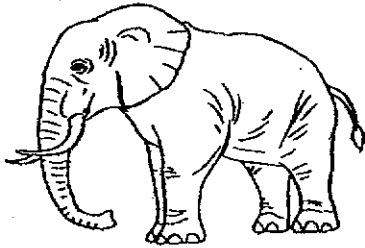
Date: \_\_\_\_\_

Class: Primary 3/ \_\_\_\_\_

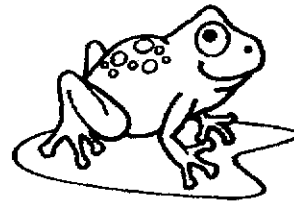
**Section B: (20 marks)**

Write your answers to questions 21 to 26 in the space provided.  
The number of marks allocated is shown in brackets [ ] at the end of each question or part of the question.

21 The pictures below show two animals.



animal A



animal B

(a) Which group of animals do animal A and animal B belong to? [2]

Animal	Group of animal
A	
B	

(b)(i) State one characteristic of the group of animal that A belongs to. [1]

---



---

(ii) State one characteristic of the group of animal that B belongs to. [1]

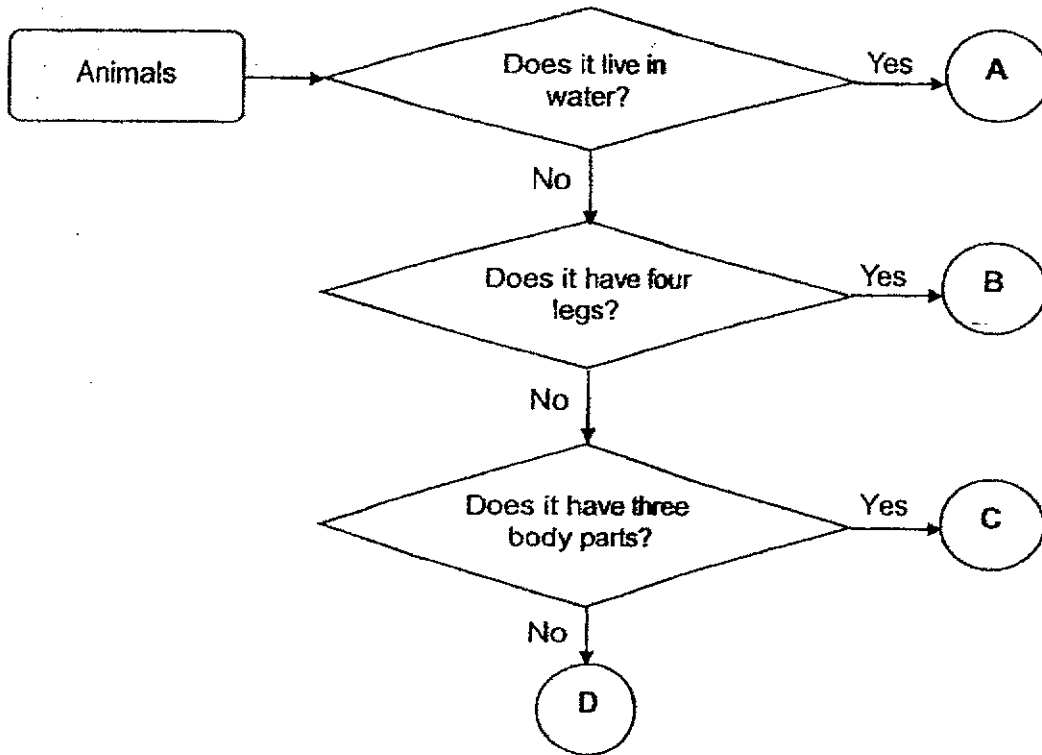
---



---

Score	4
-------	---

22 Study the flowchart below carefully.



(a) Use the helping words in the box below to fill in each blank.

[2]

insect	reptile	fish	bird
--------	---------	------	------

According to the flowchart,

(i) A is most likely a \_\_\_\_\_

(ii) B is most likely a \_\_\_\_\_

(iii) C is most likely a \_\_\_\_\_

(iv) D is most likely a \_\_\_\_\_

(b) Based only on the flowchart above, state one similarity between animals B and C. [1]

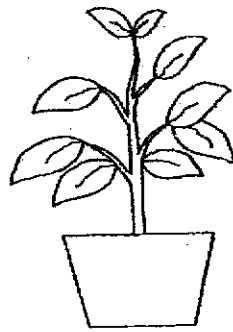
---



---

Score	3
-------	---

- 23 Jack has two similar potted plants in his garden. He removed all the leaves from plant B but continued to water both plants daily.



Plant A



Plant B

- (a) Jack observed that plant A grew more leaves but plant B died after 2 weeks. Explain why. [2]

---

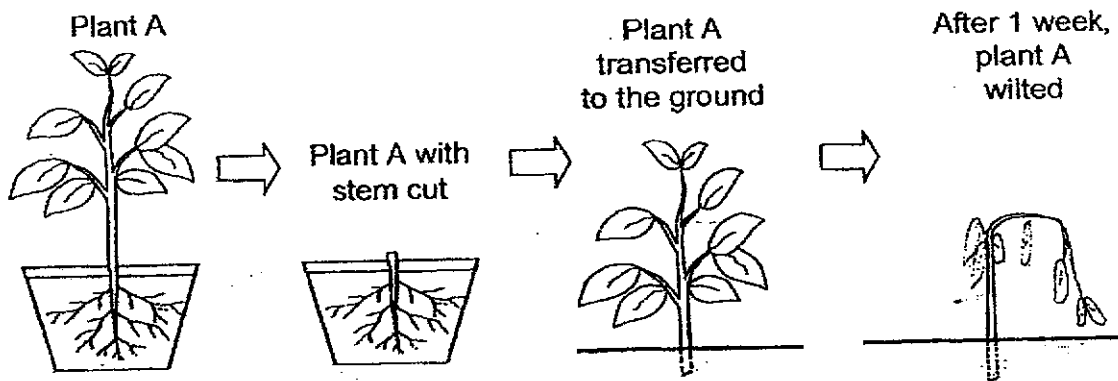


---



---

- (b) Jack wanted to remove plant A from the pot and plant it in the ground. He had difficulties pulling out the plant so he cut the stem and left its roots in the pot.



- After a week, the plant wilted and died even though Jack watered it daily. Explain why the plant died. [1]

---



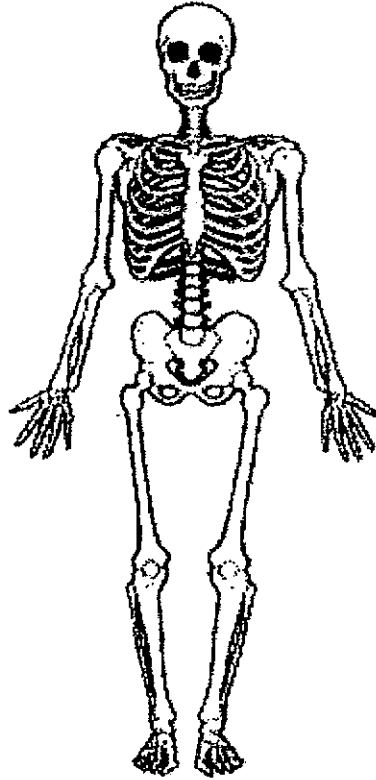
---



---

Score	3
-------	---

- 24 The diagram below shows a part of a human body system.



- (a) Identify the body system shown above. [1]

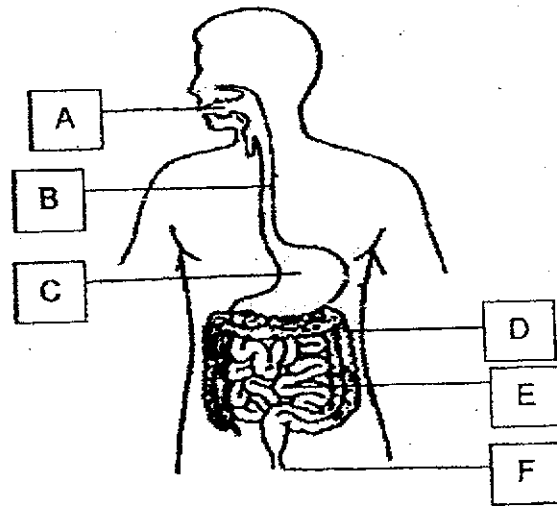
---

- (b) Name one function of the system stated in part (a). [1]

---

Score	2
-------	---

25 The diagram below shows the human digestive system.



(a) Based on the diagram above, write down the parts of the digestive system, A to F, where digestive juices are being produced. Do **not** name the parts. [1]

---

(b) State the function of part B in the diagram above. [1]

---



---

(c) Explain how chewing of food helps in digestion. [2]

---



---



---



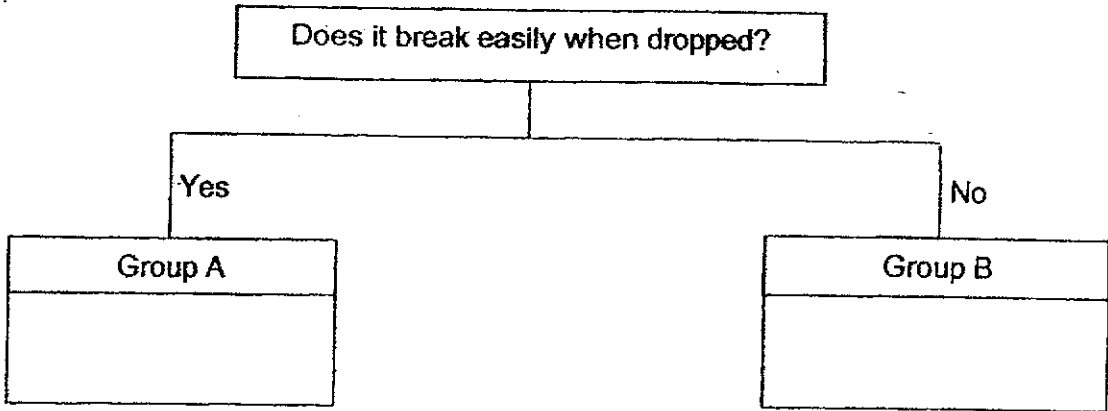
---

Score	4
-------	---

26 The box below lists four different materials.

glass metal rubber ceramic

(a) Classify these materials into group A and B correctly by writing your answers in the boxes below. [1]



(b) From the four materials given above, which material can be used to make a walking stick for an old man to hold and help him to walk safely? Explain your answer. [2]

---

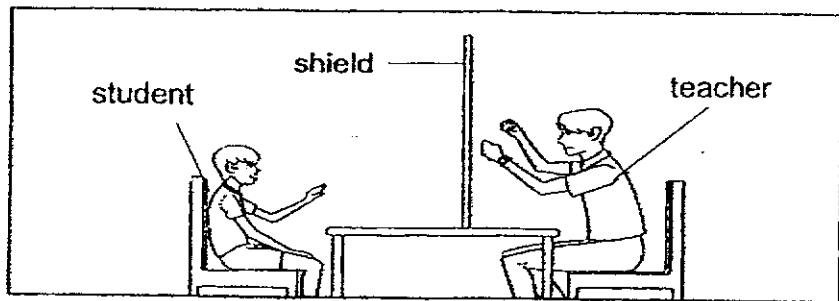


---



---

(c) The diagram below shows a set-up in an oral examination room. The shield which allows both the student and teacher to see each other clearly is made of material Z.



Based on the information given above, state a property material Z. [1]

---

End of paper

Score	4
-------	---



**Simplified Answer Key**

**Section A**

No.	Answer	No.	Answer	No.	Answer
1.	3	9.	4	17.	3
2.	3	10.	1	18.	4
3.	1	11.	3	19.	2
4.	2	12.	3	20.	4
5.	4	13.	2		
6.	3	14.	1		
7.	1	15.	1		
8.	2	16.	3		

**Section B**

No.	Acceptable answers
21a	Animal A - mammal Animal B - amphibian
21bi	(Mammal) - gives birth to young alive/ produce <b>milk</b> have hair.
21bii	(Amphibian) - moist skin/ can live on land and <b>in water</b> / breathe through their lungs on land.
22a	i fish ii reptile iii insect iv bird
22b	They do not live <b>in water</b> .
23a	Plant A has leaves to make food while plant B does not have leaves to make food. Plants / living things need food to survive.
23b	The plant is not able to take in water without roots so it wilted and died.
24a	<b>skeletal</b> system
24b	To support the body. / To protect organ in the body. / To give the body its shape.

25a	A, C and E
25b	It transports the food from the mouth down to the stomach.
25c 5	Chewing breaks food into smaller pieces so that (more) digestive juices can act on / come into contact with the larger surface area of food to digest food faster.
26a	A: glass, ceramic
	B : rubber, metal
26b	Metal. It is strong and can support the old man who uses it to walk.
	It allows most light to pass through. / It is transparent.
26c	

END