



Catholic High School (Primary)
Primary 3 Science
Weighted Assessment

Name: _____

Class: Pri. 3: _____

Date: _____

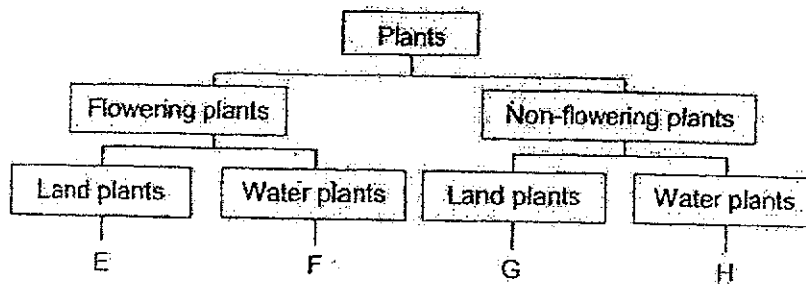
Parent's Signature: _____

MARKS	30
-------	----

Section A (10 × 2 marks)

For each question from 1 to 24, four options are given. One of them is the correct answer. Make your choice (1, 2, 3 or 4). Write your answer in the brackets provided. (20 marks)

1. Study the diagram below.



Jack saw a plant growing on a tree. He found spore bags on the underside of its leaves.

Based on the diagram, which of the following represents this plant?

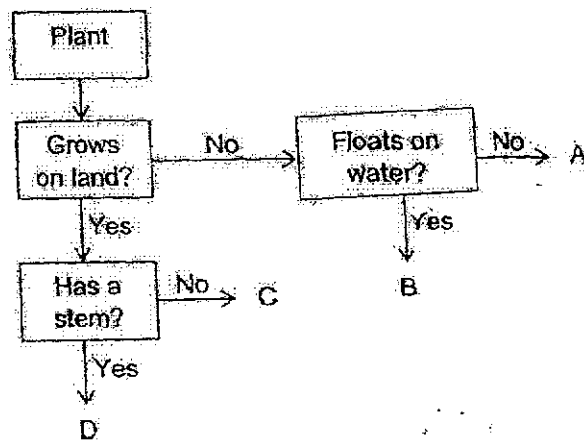
- (1) E
- (2) F
- (3) G
- (4) H

()

2 The diagram below shows a water plant.



Study the diagram below.



Which of the following represents the water plant?

- (1) A
- (2) B
- (3) C
- (4) D





3. The table below shows the characteristics of animals P and Q. A tick (✓) shows the presence of the characteristic.

Characteristics	P	Q
has dry scaly skin	✓	
can live both on land and in water	✓	
females produce milk for young		✓

Which of the following best represents animals P and Q?

	P	Q
(1)	reptile	amphibian
(2)	reptile	mammal
(3)	amphibian	reptile
(4)	amphibian	mammal

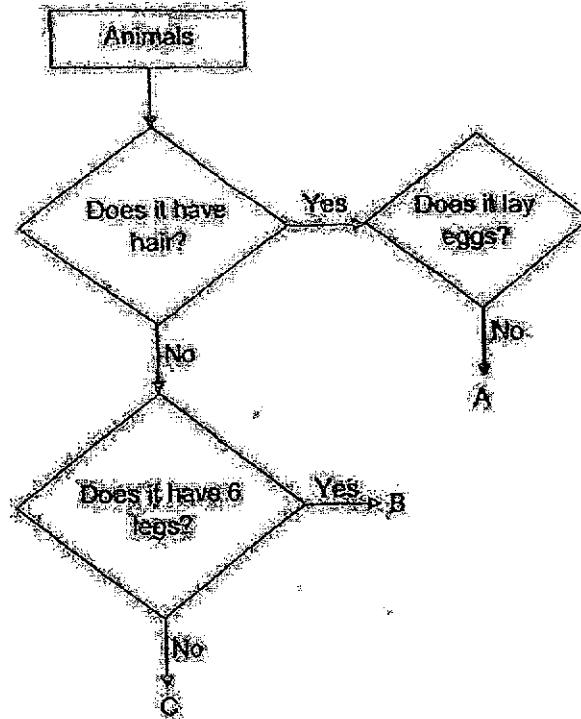
4. The animals below are grouped according to one common characteristic.

 animal W	 animal X
 animal Y	 animal Z

Based on the diagram above, which animal does not belong to the group?

- (1) animal W
 (2) animal X
 (3) animal Y
 (4) animal Z

5 Study the diagram below.



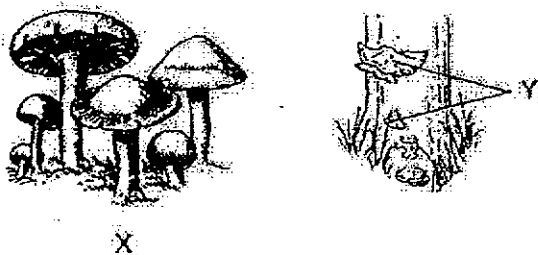
Which animal groups correctly represent A, B and C?

	A	B	C
(1)	amphibian	fish	bird
(2)	mammal	insect	fish
(3)	fish	amphibian	bird
(4)	insect	mammal	fish

6 Which statement about bacteria is not correct?

- (1) Some bacteria are harmful.
- (2) Bacteria come in different shapes.
- (3) Bacteria feed only on dead living things.
- (4) Bacteria cannot be seen with the naked eyes.

7. The diagram below shows two living things.



How are X and Y similar?

- A Both reproduce by spores.
- B Both are non-flowering plants.
- C Both can make their own food.
- D Both need air, food and water to survive.

- (1) A and D only
- (2) B and C only
- (3) A, B and D only
- (4) A, B, C and D

()

8. The diagram below shows a boy using a swimming board.



Which material and its given property should be considered to make the swimming board?

	Material	Property
(1)	A	It is flexible.
(2)	B	It is absorbent.
(3)	C	It is able to float.
(4)	D	It allows light to pass through.

()

9 Study the table below.

Materials	Transparent	Waterproof	Flexible
A	No	No	No
B	No	No	Yes
C	Yes	Yes	No
D	Yes	Yes	Yes

Which material, A, B, C or D, is most suitable to make part X of an umbrella?



- (1) A
- (2) B
- (3) C
- (4) D

()

10 Jacinta wanted to find out which bag, A or B, is more suitable for carrying canned food from the supermarket without tearing.



A



B

What should she do to find out which bag is more suitable?

- (1) Put both bags in water.
- (2) Bend both bags slowly.
- (3) Shine a light at the bags.
- (4) Put canned food into both bags.

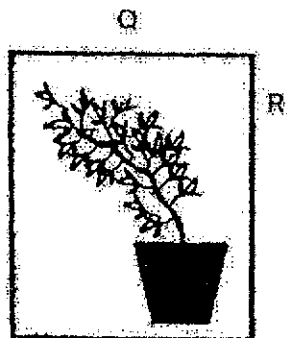
()

Section B (10 marks)

For questions 11 to 14, write your answers in this booklet.

The number of marks available is shown in brackets [] at the end of each question or part question. (10 marks)

- 11 Muthu placed a plant in a cardboard box which had a hole in it. After 5 days, he realised that the plant had grown as shown in the diagram below.



- (a) Based on how the plant has grown, which part, P, Q or R, could the hole most likely be located? [1]

.....

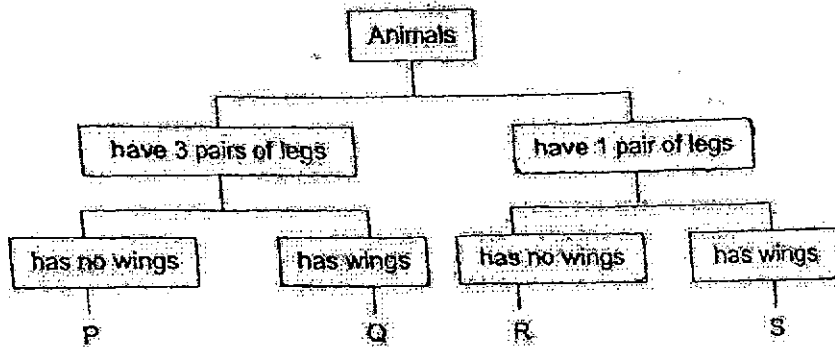
- (b) If the hole was covered with a piece of black paper, what would happen to the plant after one month? [1]

.....

(Go on to the next page)

SCORE	2
-------	---

12 Study the diagram below.



(a) Based on the diagram above, describe animal R. [1]

(b) The diagram below shows animal W.



Which letter, P, Q, R or S, in the diagram above best represents animal W? [1]

(c) (i) Which group of animals does animal W belong to? [2]

(ii) Apart from the characteristics shown in the diagram above, state one other characteristic to support your answer. [2]

(Go on to the next page)

SCORE	3
-------	---

13. Jun Hao left an orange on the table as shown in the diagram below. After a few weeks, he noticed living thing X growing on it.



orange at the start



orange a few weeks later

- (a) Based on the diagram, which group of living things does X belong to? [1]

- (b) Based on your answer in (a), what does X feed on? [1]

- (c) How does X reproduce? [1]

(Go on to the next page)

SCORE	3
-------	---

14. Jason wanted to find out which material, A, B, C or D, is most suitable to make a bookshelf.

He placed identical books on four similar bookshelves made of materials A, B, C and D until the bookshelf broke.



He recorded his observation in the table below.

Material	A	B	C	D
Maximum number of identical books needed to break the shelf	15	12		5

- (a) Based on the result above, which is the most suitable material to make the bookshelf? [1]

- (b) Explain your answer in (a). [1]

End of Paper

SCORE	2
-------	---

SCHOOL : CATHOLIC HIGH SCHOOL
 LEVEL : PRIMARY 3
 SUBJECT : SCIENCE
 TERM : WEIGHTED ASSESSMENT 1

BOOKLET A

Q1	Q2	Q3	Q4	Q5	Q6	Q7	Q8	Q9	Q10
3	2	2	1	2	3	1	3	4	4

BOOKLET B

Q11	a) The hole is most likely located at part P. b) The plant will die as there is no sunlight.
Q12	a) Animal R has no wing and only have one pair of legs. b) Q c) i) Animal W belong to the group insect. ii) Animal W has 3 pair of legs.
Q13	a) Fungi b) It feeds on living things both dead and alive c) By spores
Q14	a) Material C b) Material C can hold the most number of books before it breaks. This shows that material C is the strongest material.

