

**Catholic High School (Primary)**  
**Primary 3 Science**  
**Weighted Assessment 3**

Name: \_\_\_\_\_ ( )

Class: Pri 3 \_\_\_\_\_

MARKS	20
-------	----

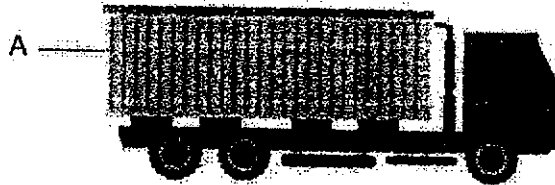
Parent's Signature: \_\_\_\_\_

**Section A (6 × 2 marks)**

For each question from 1 to 6, four options are given. One of them is the correct answer. Make your choice (1, 2, 3 or 4). Write your answer in the brackets provided.

- 1 A container truck is used to transport heavy objects.

What are the properties of the material used to make part A of the container?



Key

✓ : yes

× : no

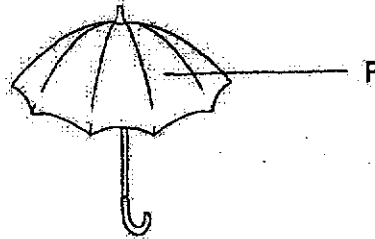
	Property		
	flexible	strong	
(1)	✓	×	( )
(2)	×	✓	
(3)	×	×	
(4)	✓	✓	

- 2 Which is not a function of the skeletal system?

- (1) to take in oxygen  
 (2) to protect the brain  
 (3) to support the body  
 (4) to protect the lungs

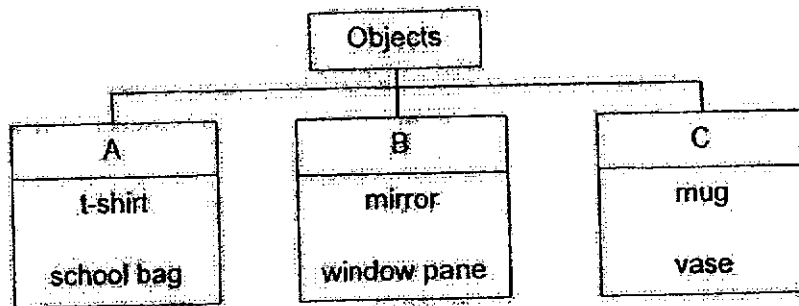
( )

3. What material is part F of the umbrella most likely made of?



- (1) wood
- (2) glass
- (3) metal
- (4) plastic

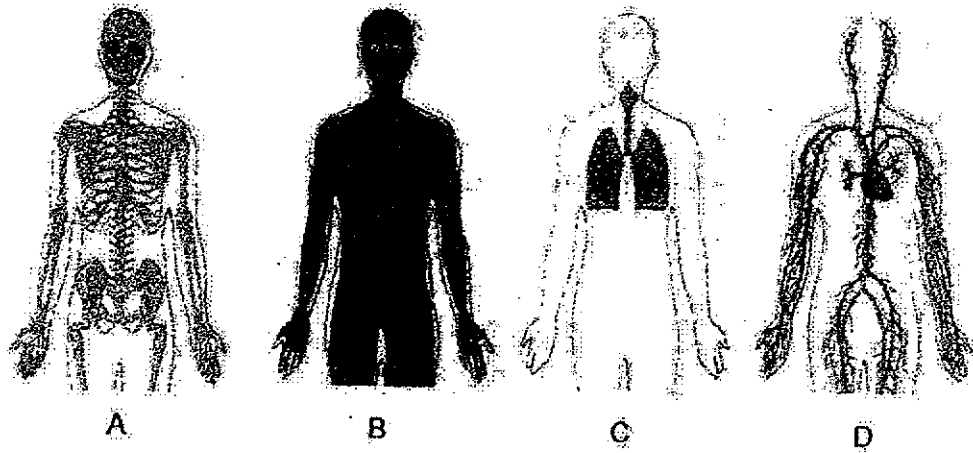
4. The objects are grouped according to the type of materials they are made of.



Which of the following correctly shows A, B and C?

	A	B	C
(1)	rubber	metal	glass
(2)	fabric	glass	ceramic
(3)	rubber	glass	metal
(4)	fabric	ceramic	rubber

5 Study the four organ systems.

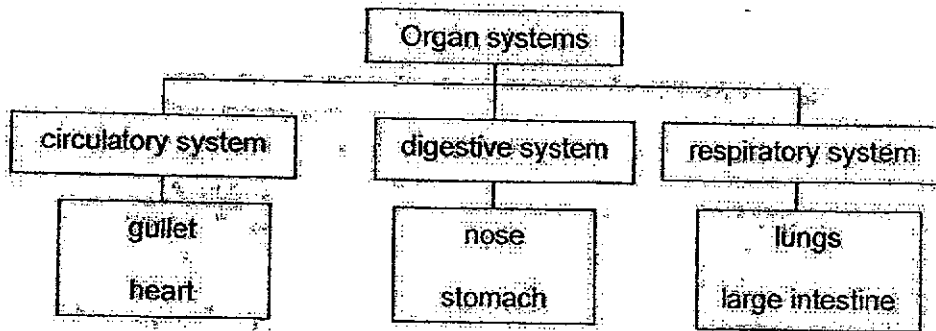


Which organ systems help Brandon to breathe faster and his heart to beat faster during a swim?

- (1) A and B
- (2) A and D
- (3) B and C
- (4) C and D

( )

6 Study the diagram.



Which organs are not grouped correctly?

- (1) lungs, gullet, nose
- (2) lungs, stomach, heart
- (3) gullet, nose, large intestine
- (4) heart, stomach, large intestine

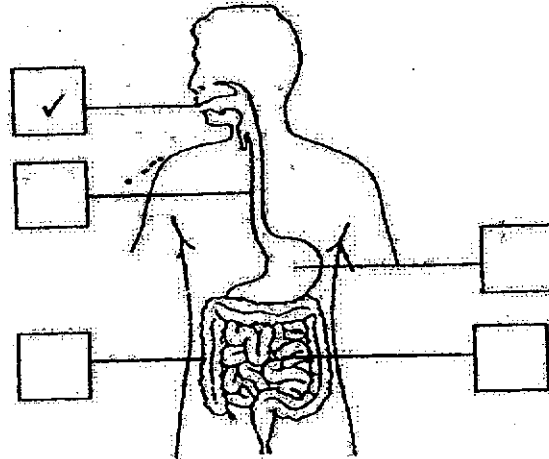
( )

**Section B (8 marks)**

For questions 7 to 9, write your answers in this space provided.

The number of marks available is shown in brackets [ ] at the end of each question or part question. (8 marks)

7 The diagram shows the human digestive system.



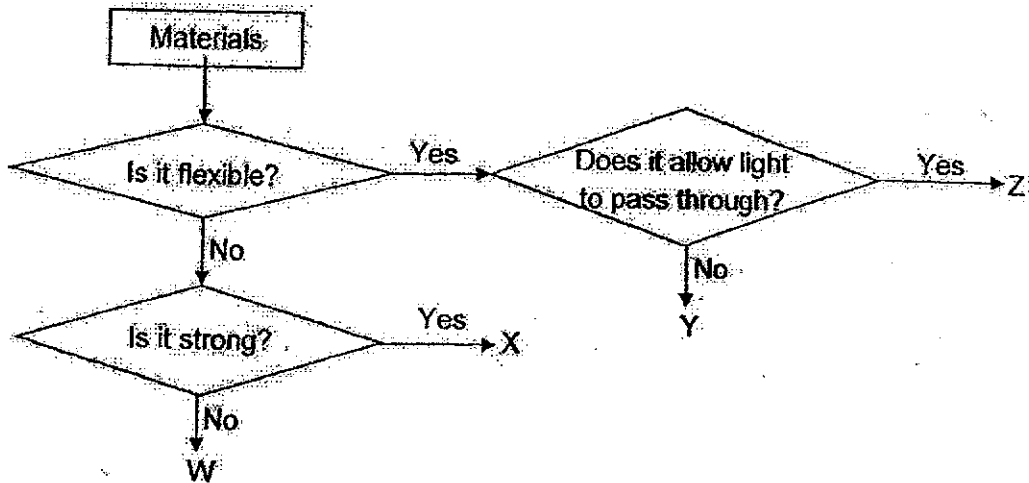
(a) Put a tick (✓) in the box(es) where digestive juices are added. The first one has been done for you. [1]

(b) Draw a line to match each organ to its function. [1]

Organ	Function
large intestine	Water is removed from the undigested food.
mouth	The digested food passes through the walls into the blood.
small intestine	Digestion starts. Food is chewed and mixed with saliva.

SCORE	2
-------	---

8. The diagram shows the properties of materials W, X, Y and Z.



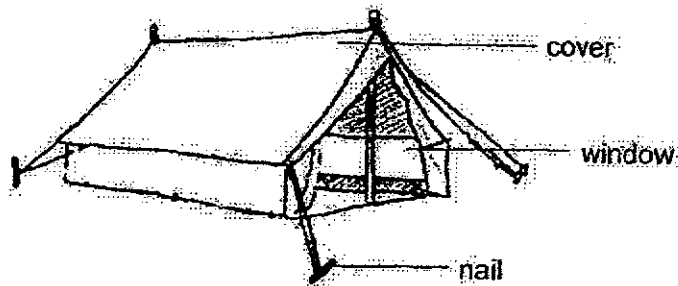
(a) State one similarity between materials Y and Z. [1]

\_\_\_\_\_

(b) State the properties of material W. [1]

\_\_\_\_\_

The diagram shows an outdoor tent.

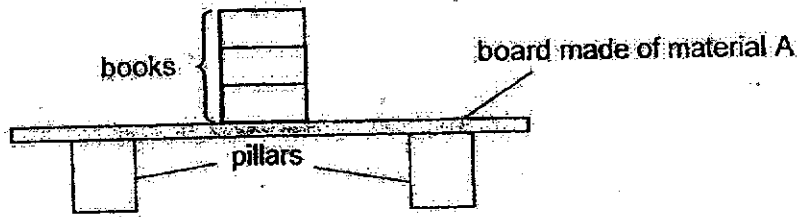


(c) Write "T" for true and "F" for false in the boxes. [1]

i.	Material X can be used to make the nail.	
ii.	Material Z can be used to make the window.	

SCORE	3
-------	---

9. Paul placed a board made of material A over two pillars. Next, he stacked similar books, one at a time, on the board until it broke. He repeated the experiment using boards made of materials B and C.



His results are shown in the table.

Material of board	Number of books the board could hold before it broke
A	3
B	10
C	16

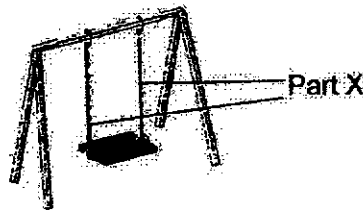
- (a) Which property of the materials was Paul trying to find out?  
Put a tick (✓) in the correct box.

[1]

	Tick (✓)
flexibility	
strength	
transparency	

- (b) Which material A, B or C is most suitable to make part X of a swing?  
Explain why.

[2]




---



---

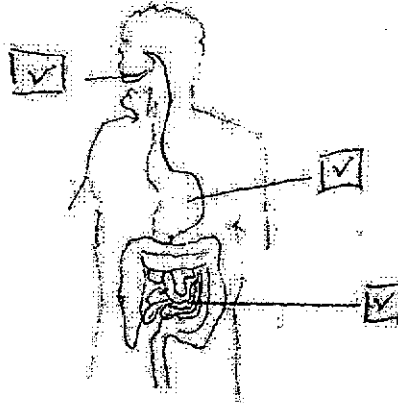
End of Paper

SCORE	3
-------	---

## Weighted Assessment 3

Q1. 2    Q2. 1    Q3. 4    Q4. 2    Q5. 4    Q6. 3

Q7 (a)



- a. 7, b. large intestine — water is removed from the undigested food.  
 mouth — Digestion starts. Food is chewed and mixed with saliva.  
 small intestine — The digested food passes through the walls into the blood.

Q8 (a) Y and Z are flexible

(b) W is not strong and not flexible

(c) i. T

(c) ii. F.

Q9. (a) strength

(b). C

Material C because C could hold the most number of books so C is the strongest.

7  
END

