

METHODIST GIRLS' SCHOOL
Founded in 1887



PRIMARY 4
SCIENCE
WEIGHTED ASSESSMENT 1

Total Time for Paper: 30 mins

INSTRUCTIONS TO CANDIDATES

Do not turn over this page until you are told to do so.

Follow all instructions carefully.

Answer all questions.

Name: _____ ()

Class: Primary 4. _____

Date : _____ February 2024

Parent's signature: _____

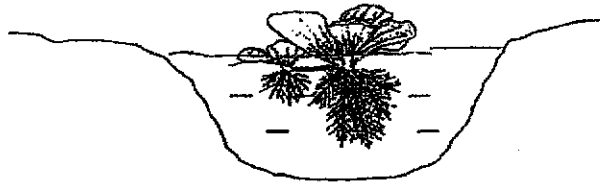
Section A	12
Section B	8
Total	20

This paper consists of 8 printed pages including this page.

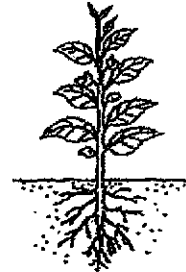
Section A

For each question from 1 to 6, four options are given. One of them is the correct answer. Make your choice (1, 2, 3 or 4) and write in the bracket provided. [12 marks]

1. The diagrams below show Plant A and Plant B.



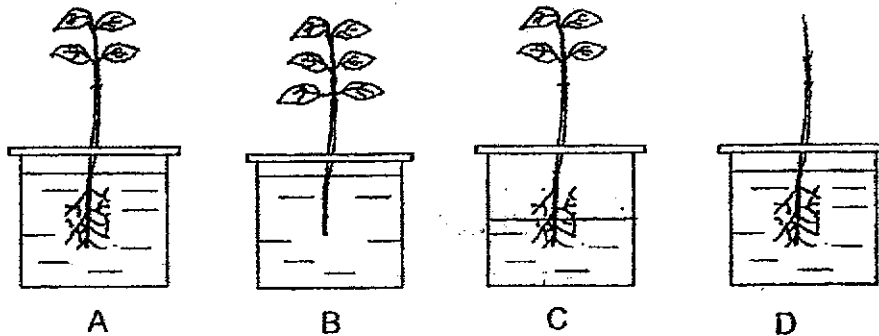
Plant A



Plant B

Which one of the following is not true for both Plants A and B?

- (1) The roots absorb water.
 - (2) The roots take in mineral salts.
 - (3) The roots hold the plant firmly to the soil.
 - (4) The roots help the plants to survive and grow. ()
2. Sam conducted an experiment to find out if plants need leaves to survive.

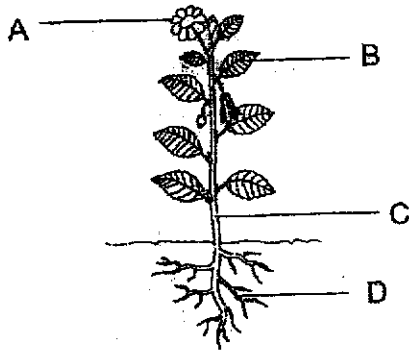


Which of the two set-ups above should he choose to conduct a fair test?

- (1) A and B only
- (2) A and D only
- (3) B and C only
- (4) C and D only ()

(Go on to the next page)

3 A flowering plant is shown below.

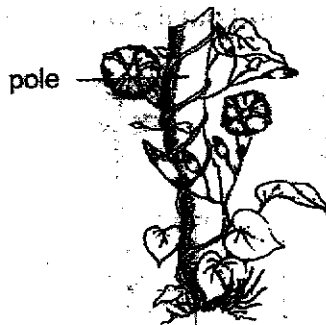


Which of the following correctly matches the plant part to its function?

	Plant parts	Functions
(1)	A	Traps sunlight to grow
(2)	B	Makes food for the plant
(3)	C	Takes in water and mineral salts
(4)	D	Supports branches and leaves

()

4 The picture below shows a plant X.



Which of the following statements is true about the stem of the plant X?

- A It is woody.
- B It is strong and holds the plant upright.
- C It climbs up a pole to get more sunlight.
- D It transports food and water and to the various parts of the plant.

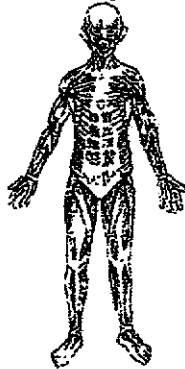
- (1) A and B
- (2) A and C
- (3) B and D
- (4) C and D

()

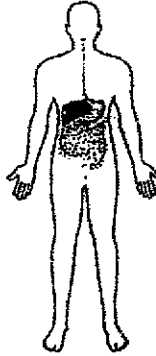
(Go on to the next page)

4

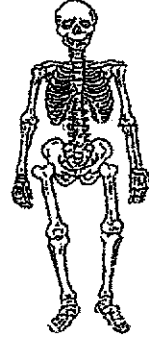
5 Study the body systems P, Q and R as shown below.



System P



System Q



System R

Which of the following statements are true?

- A Systems Q and R break food into simple substances.
- B Systems P and R work together to make the body move.
- C Without system R, the important parts of our body are not protected.
- D Without systems P and Q, the body cannot exchange gases with the surroundings.

- (1) A and B
- (2) B and C
- (3) C and D
- (4) A, B and C

()

6 May is playing floorball with her friend.



Which systems are involved to help her play floorball?

- A Skeletal system
- B Muscular system
- C Circulatory system
- D Respiratory system

- (1) A and B only
- (2) A and C only
- (3) B, C and D only
- (4) A, B, C and D

()

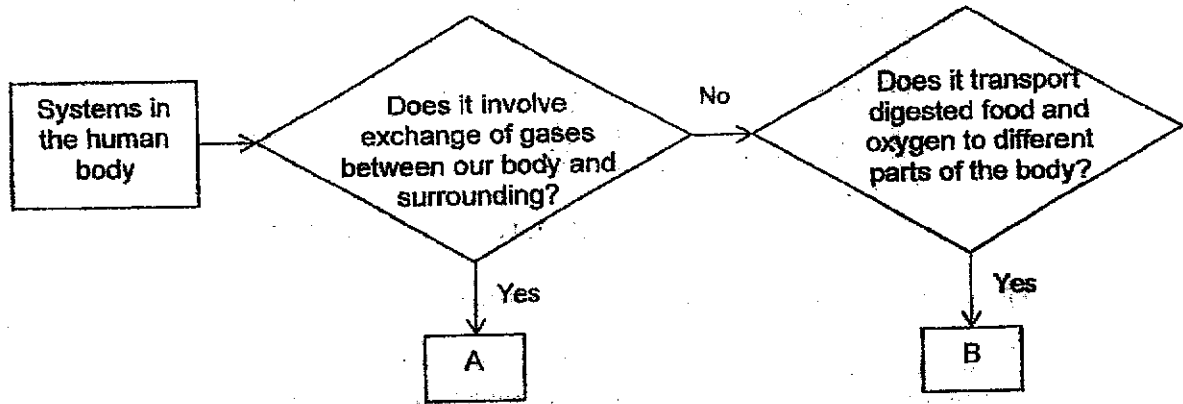
(Go on to the next page)

Section B

For questions 7, 8 and 9, write your answers in the spaces provided.

[8 marks]

7 The flowchart below shows the characteristics of some systems in the human body.



(a) Identify the human systems above.

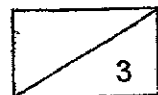
[2]

A: _____

B: _____

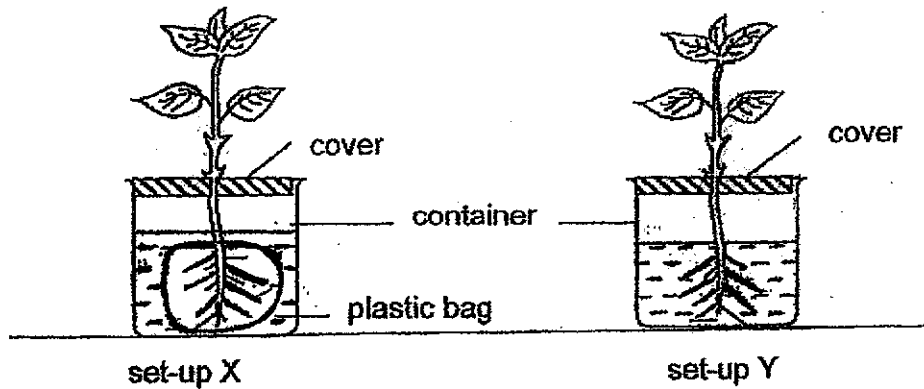
(b) State another function of human system B.

[1]



(Go on to the next page)

- 8 Rahim carried out an experiment using the set-ups X and Y. The roots of the plant in set-up X was wrapped with a plastic bag. He sealed each container with a cover as shown below.



He recorded his results in the table below.

Day	amount of water (ml) left in	
	set-up X	set-up Y
1	200	200
2	200	190
3	200	175
4	200	150

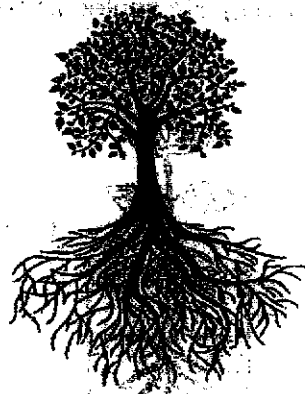
- (a) Using the information above, explain why the amount of water left in set-up Y decreased. [1]

- (b) Put a tick (✓) in one of the boxes below to identify the changed variable in this experiment. [1]

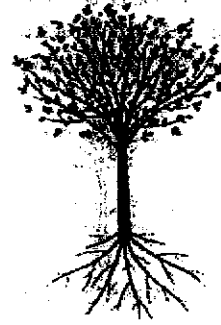
<input type="checkbox"/>	Number of leaves
<input type="checkbox"/>	Presence of roots in contact with water
<input type="checkbox"/>	Amount of water in beaker before experiment
<input type="checkbox"/>	Amount of water in beaker after the experiment

(Go on to the next page)

The diagrams below show two different trees, R and S growing near each other.

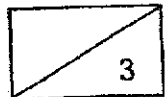


Tree R



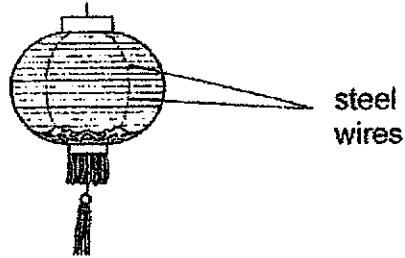
Tree S

- (c) During a thunderstorm, one of the trees fell and the roots were pulled out from the ground. Which tree was more likely to have fallen? Explain your answer [1]



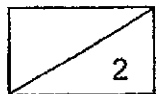
(Go on to the next page)

- 9 The diagram below shows a lantern. Mei Mei and her father used some steel wires to make the frame of the lantern. They then covered the frame with paper.



- (a) Name the human body system that serves the same function as the frame of the lantern. [1]

- (b) State two functions of this body system. [1]



End of paper

ANSWER KEY

YEAR : 2024
 LEVEL : PRIMARY 4
 SCHOOL : MGS
 SUBJECT : SCIENCE
 TERM : WA 1

SECTION A

Q1	3	Q2	2	Q3	2	Q4	4	Q5	2
Q6	4								

SECTION B

Q7	a) A: Respiratory system B: Circulatory system b) Human system B also transports waste materials away from all parts of the body.
Q8	a) The amount of the water decreased as the roots of the plant in set-up Y were not covered so the roots could take in the water. b) Presence of roots in contact with water. c) Tree S. S had less roots than tree R and roots anchor the tree to the ground so tree S fell.
Q9	a) Skeletal system b) The skeletal system supports the body and gives it shape.

1
END

